



SUCCESS STORY
ON
TRANSPORTATION
OF
AGRICULTURE PRODUCES
THROUGH
ROPE WAYS IN THE
HILLY TERRAINS
IN
MEGHALAYA

Department of Agriculture
Meghalaya

TITLE: Success story on transportation of agriculture produces through rope ways in the hilly terrains in Meghalaya

CATEGORY Agriculture

CHALLENGES:

Meghalaya topography comprises of various elements including the landscape, climate, altitude, water bodies, flora and fauna of the entire region. There are many challenges which the people living in Rangphlang areas have faced over the years, one of which is the transportation of agriculture produce from the low lying areas. Even though the areas produce many kinds of high quality of fruits, vegetables, broom sticks, honey, etc. The farmers are unable to market their produce due to the harsh hilly terrains and the high cost of transportation as they had to trek for 3 to 4 Hours in the hilly terrains to reach the motorable road which ranges from Rs. 6.00 to Rs. 7.00 per kg for fruits and vegetables and Rs. 10.00 per kg for broomsticks. Apart from the difficulties of transporting, the people would have to spend around 10 to 14 days for transporting the 6 to 10 quintals of broomsticks to the upland and then to the market.

INTERVENTION:

To cope with the challenges faced by the farmers in the areas, the Directorate of Agriculture have come up with an innovative idea in transporting the agriculture produce through rope ways. With this aim in mind, rope ways were constructed under RKVY 2013-14 connecting the hills of Mawkshim to Mawkala and Mawkala to Mawshrain in Rangphlang area in Mawkynrew Block under the supervision of the Border Areas Development Department at an estimated cost of Rs. 20 Lakhs each

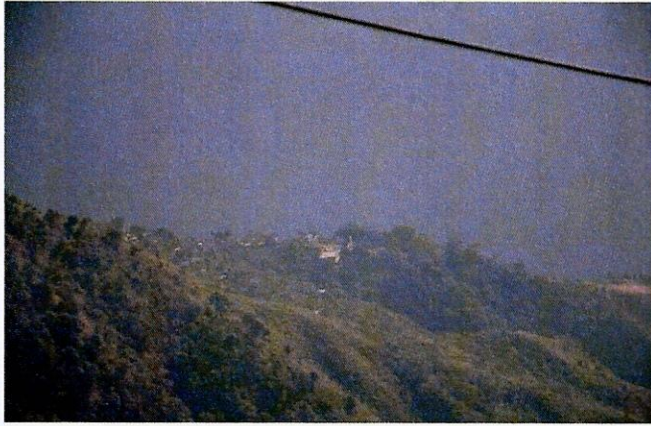
KEY RESULTS/ INSIGHTS/ INTERESTING FACTS.

With the coming of the rope ways, the people in the areas have benefited highly as both the cost and time of transportation have been drastically reduced. The people can now transport their produce at a rate of Re. 1.00 per Kg. for fruits and vegetables cutting the rate of transportation by Rs. 5.00 to Rs. 6 per Kg and Rs. 2.00 per Kg. for broom sticks cutting the rate of transportation by Rs. 9.00 per Kg. More over the people can now transport the 6 to 10 quintals of their produce (broomsticks) within one day which usually takes around 10 to 14 days. Thus the construction of Rope Ways in Rangphlang have saved both time and money.

IMPACTS:

With the coming of the Rope Ways in the hilly and hard terrains of the region, the economic conditions of the people living in the lowlands of the Rangphlang have increase immensely

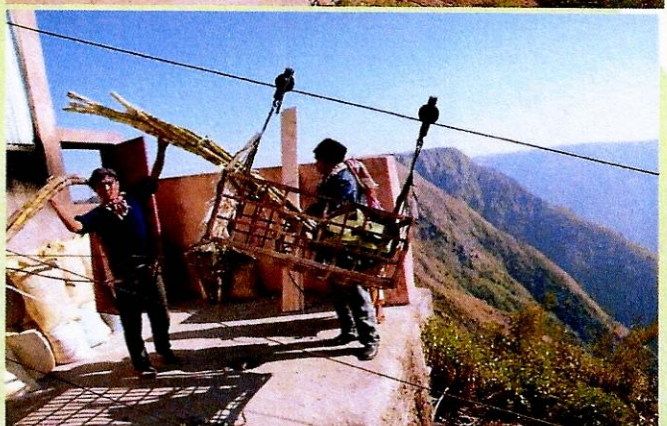
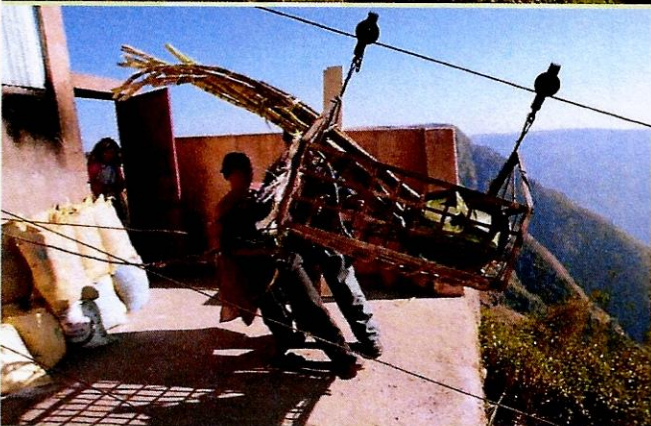
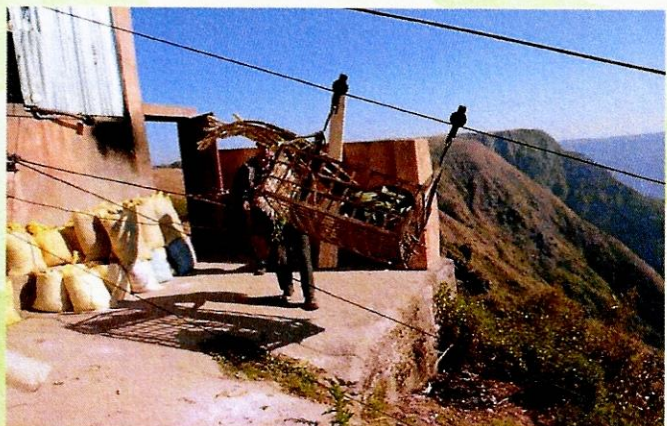
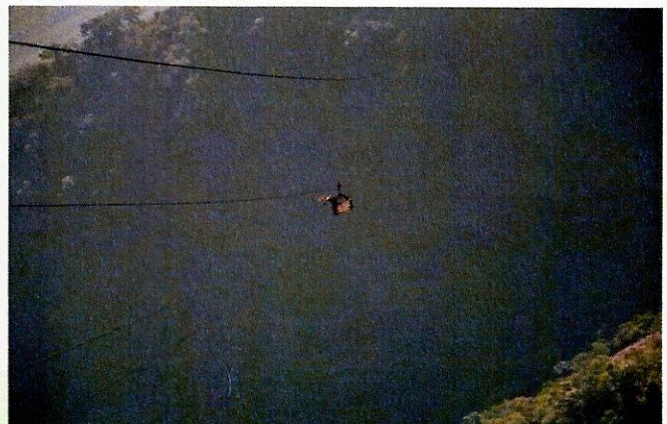
VILLAGES AT THE FOOT HILLS OF RANGPHLANG



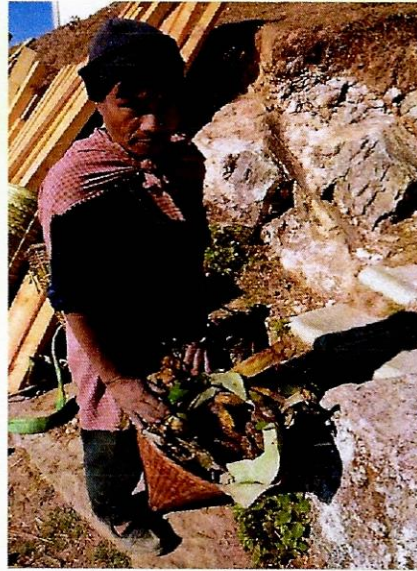
PULLY INSTALLED IN THE UPHILL OF MAWKSHIM



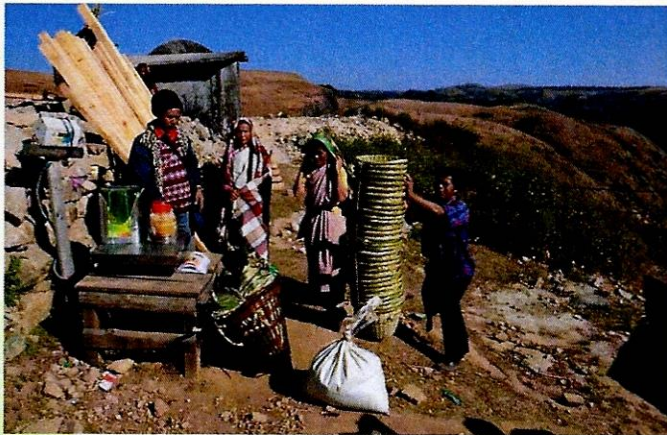
A CARRIAGE WITH FRUITS BEING DRAWN THROUGH THE ROPE WAY FROM THE FOOT HILLS OF RANGPHLANG



FARMER BRINGING A LOAD FULL OF BANANAS THROUGH THE ROPE WAY FOR FURTHER TRANSPORTATION TO THE MARKET



AGRICULTURE PRODUCE BEING WEIGHT AT THE UPHILL



FRUITS BEING FINALLY CARRIED TO THE MARKET FOR SALE.

